

# :mediaproxy

monitoring and logging of remote services

## ENIGMA:LOGSERVER

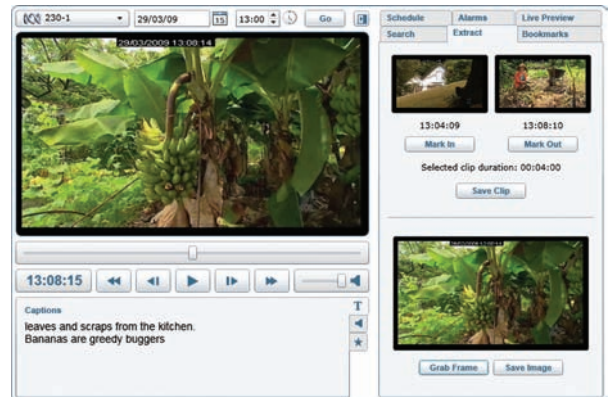
### Professional Broadcast Monitoring and Compliance Logging

Mediaproxy offers a professional and flexible solution for compliance logging that eliminates banks of long-play recorders, and replaces them with compact servers linked to your existing LAN, WAN and Intranet. Media may be recorded on RAID protected local storage for weeks, months or years or archived to optical disk or deep storage (i.E. NAS / SAN).

LogServer eliminates time-consuming copy and search and allows online retrieval in seconds by any authorised person, from almost any location. Enigma LogServer also includes confidence monitoring of diverse program streams from multiple sites including real-time alarm indication, audio alerts and email notifications.

The server can operate with multiple resolutions and bit-rates simultaneously, allowing customers to optimise your LAN and WAN loading and streaming or archive quality.

Enigma LogServer offers configuration, review, extract and monitoring through an intuitive and low-bandwidth web-interface based on Microsoft's latest Silverlight technology, significantly simplifying the deployment of client access and administration.



## Features

<b>Burnt in Data / Text</b>	Configure the system to burn-in timecode, captions, station ID and custom data.
<b>Script Data</b>	Using the embedded stream that accompanies our logging clips, any user or system data may be recorded and embedded within the clip for it's life.
<b>Continuous Media</b>	Extraction and playback across clips boundaries.
<b>Streaming</b>	Mediaproxy logging systems operate simultaneously with multiple resolutions and bit-rates, allowing you to optimise your LAN and WAN loading and streaming / archive quality.
<b>VBI Captions &amp; Text</b>	<ul style="list-style-type: none"><li>• Decode and display, PAL teletext and NTSC closed captions, Log to disk and/or burn-in.</li><li>• Extract with or without associated video.</li></ul>
<b>XDS &amp; V-Chip</b>	Decode and log NTSC embedded data including VCHIP Ratings. Burn into vision, or add to clip metadata.
<b>As-Run, Schedule &amp; EPG with search</b>	<ul style="list-style-type: none"><li>• As-Run Log integrates with customer automation, allowing the user to select playback by content rather than time. LogServer easily integrates with virtually every automation system.</li><li>• Scheduled playlist provides the same function when As-Run is not yet available drawing from schedule data rather than as-run logs.</li></ul>
<b>Multiple Channel Audio</b>	<ul style="list-style-type: none"><li>• Descriptive Audio (for the visually impaired).</li><li>• Utility Audio logging (i.e. order-wires, talkback).</li><li>• Multiple simultaneous language support.</li><li>• Complete Integration with Windows Media Player.</li></ul>
<b>Alarm notification</b>	Monitor operational, system and hardware alarms via Email, SNMP and Twitter.
<b>Automatic media migration</b>	Incremental backups to station supplied network attached storage (NAS/SAN).
<b>Competitive Data Tracking &amp; Analysis</b>	Audience Measurement (Ratings) for comparison with competitive stations and channels.
<b>AV Analyser</b>	Detect persistent high and low levels. Generate alarms for frozen video sources.
<b>Third Party Interfaces</b>	Custom integration for third parties via web services, TCP/IP and USB connections.
<b>RSS Support</b>	Access all or selected media and alarms through RSS subscription to any LogServer.

# :mediaproxy

monitoring and logging of remote services



## Enigma LogServer 1RU

## Enigma LogServer 2RU

## Enigma LogServer 3RU

### Storage

RAID5 configuration with a total of 2.6TB usable storage.

RAID5 configuration with a total of 6.5TB usable storage.

RAID5 configuration with up to 20TB of usable storage.

### Video Inputs (NTSC / PAL)

**SDI** up to 2 channels  
**Analog** up to 4 channels  
**ASI** up to 4 channels

**SDI** up to 6 channels  
**Analog** up to 8 channels  
**ASI** up to 4 channels

**SDI** up to 6 channels  
**Analog** up to 8 channels  
**ASI** up to 4 channels

### Video Logging period at 512 kbps per channel

**SDI** up to 180 days  
**Analog** up to 120 days  
**ASI** up to 120 days

**SDI** up to 180 days  
**Analog** up to 120 days  
**ASI** up to 250 days

**SDI** up to 500 days  
**Analog** up to 450 days  
**ASI** up to 2 years

### Radio Inputs

**FM (RF)** up to 24 channels  
**AM (RF)** up to 16 channels  
**Analog** up to 4 channels  
**DAB+** up to 24 channels

**FM (RF)** up to 24 channels  
**AM (RF)** up to 16 channels  
**Analog** up to 12 channels  
**DAB+** up to 24 channels

**FM (RF)** up to 24 channels  
**AM (RF)** up to 16 channels  
**Analog** up to 12 channels  
**DAB+** up to 24 channels

### Radio Logging period at 192 kbps per channel

**FM (RF)** up to 45 days  
**AM (RF)** up to 70 days  
**Analog** up to 300 days  
**DAB+** up to 45 days

**FM (RF)** up to 120 days  
**AM (RF)** up to 180 days  
**Analog** up to 200 days  
**DAB+** up to 120 days

**FM (RF)** up to 400 days  
**AM (RF)** up to 600 days  
**Analog** up to 800 days  
**DAB+** up to 400 days

### Dimensions

**Height** 1.7" (43 mm)  
**Width** 17.2" (437mm)  
**Depth** 27" (686 mm)  
**Gross Weight** 47 lbs (21.3 kg)

**Height** 3.5" (89 mm)  
**Width** 17.2" (437 mm)  
**Depth** 25.5" (648 mm)  
**Gross Weight** 55 lbs (24.9 kg)

**Height** 5.2" (132 mm)  
**Width** 17.7" (450 mm)  
**Depth** 25.5" (648 mm)  
**Gross Weight** 72 lbs (32.7 kg)

### General Specifications

**Processor** Dual Quad-Core Intel 5400 series Xeon CPU  
**Operating System** Windows 2003 Server  
**Power** Redundant Power Supplies  
**Optional Components** IPMI 2+ with support for embedded KVM

### About Mediaproxy

Mediaproxy is an award winning company, providing complete solutions for the monitoring and logging of rich-media. Located in Australia with a global network of broadcast integration partners, Mediaproxy is an affiliate of the Xenon Technology Group (XTG); a leader in high-performance hardware platforms and customised software solutions for broadcasters and digital content creators. Mediaproxy has established itself globally as the leading solution provider for professional broadcast monitoring and logging.

### Corporate Office

1/10 Westall Rd, Clayton South, 3169  
 Victoria, Australia  
 Tel: +61 3 9549-1100  
 Fax: +61 3 9549-1199

Reseller info:

Email: [info@mediaproxy.com](mailto:info@mediaproxy.com)

Web: [www.mediaproxy.com](http://www.mediaproxy.com)